



ALPINE ST5000

Refrigerated Glass Front Merchandiser

The Alpine ST5000 glass front refrigerated food & beverage merchandiser provides the largest dispensing capability with class leading energy efficiency. Vend sodas, juices, milk, yogurts, and other foods best served cold from one versatile package.



- ENERGY STAR® Rated
- Advanced styling & touch screen interface options
- Americans with Disabilities Act (ADA) compliant
- Programmable health safety by selection, range or row
- Unmatched beverage options
- Motor pairing capable
- Single & dual coil options
- Large LED lighted point of sale window
- Energy efficient LED lighting
- Steel snack tray option
- New self cleaning condenser coil with reverse on startup fan



Shown with platinum door styling, iCart touch screen and kick panel options.



ALPINE ST5000

Refrigerated Glass Front Merchandiser



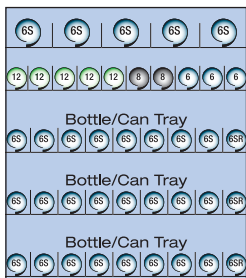
Shown in black with kick panel option.



Features

- **Optional touch screen interface**
 - Built-in, full color 7" LCD screen replaces traditional keypad & display
- **ENERGY STAR® Rated**
- **Attractive styling bezel with point of sale window**
- **Americans with Disabilities Act Compliant**
- **Standard peripheral opening for additional payment or POS systems**
- **Standard lighted keypad with Braille identification**
- **MDB support for all industry standard devices including cash, coin, debit and credit systems**
- **DEX data output support**
- **Fully integrated controller with sales and accounting features:**
 - Price setting by selection, row or machine
 - Free vend and Combo vend modes
 - Flexible space to selection setting
 - Time of day discounting
 - Time of day shutdown modes for energy savings and controlled vend times
 - Programmable point of sale messages
 - Programmable coupon and token values
 - Coin and bill rejection rate counts
 - Accountability display by selection, row or machine
 - Talker device support for sight impaired (Talker not included)
- **Motor pairing capable**
- **Proven operating environment**
 - **High: 100°F (38°C) @ 90% RH**
- **Reverse on startup condenser fan**
- **2 year warranty - contact USI for complete details**

Sample Configuration



Alpine ST5000			
Selections	Up to 60 items		
Capacity	Varies with tray configuration		
Selection Pricing	Individual from \$0 to \$9,999.95		
Payment Systems	All Industry standard MDB compatible devices		
Data Communication	DEX/UCS		
Electrical Requirements	Domestic: 115 VAC/60Hz, 9.5 AMPS International: 230 VAC/50Hz, 4.8 AMPS; With Heated Glass: 115 VAC/60Hz, 10.5 AMPS International: 230 VAC/50Hz, 5.2 AMPS		
Refrigeration	Super 1/3 HP, R-134a or R-513a Closed System		
Dimensions	Height	72" (183 cm)	Width 41" (104 cm) Depth 38" (97 cm)
Shipping Weight	*791 lbs. (358.8 kg) *Varies with tray configuration and options.		
Standard Features	GVC2 Controller, LED Lighting, iVend® Sensor System, Delivery Assist Box 9 Select Can & Bottle Trays, Door Switch		
Options	Heated Glass, iCart Touch Screen Interface, inDEX Tool, 6th Tray, Dual Helix, Motor Pairing, 10 Select Can/Bottle Tray, High Capacity Can Tray, Custom Helix and Tray Configurations, Kick Panel, Custom Colors, Custom Graphics		

In order to bring you the best products possible, we continue to improve product design and performance and as such specifications are subject to change without notice. The manufacturer makes no warranties or representations of compliance with any local, state, national or international requirements for the operation of the equipment in any application for which it is capable of being used beyond the UL and NAMA approvals listed on the product. Any purchaser is required to make an independent analysis of the fitness and legality of the product's usage before it is deployed and must continue to monitor the potential changing nature of compliance requirements. The manufacturer expressly disclaims responsibility for compliance with any laws and affirmatively requires any buyer to make an independent analysis of the fitness and legal basis of any use or application of the subject unit.

Energy Efficient

- Uses only 4.2 Kwh/day @ 75°F (24°C), 45% RH based on refrigerating 34.6 cu.ft. of space
- Low-E Argon filled insulated glass
- LED lighting
- Thickest foaming on the market with Eco-friendly BASF Autofroth® foaming process
- Balanced airflow design
- Energy saving programmable shutdown modes
- Eco-friendly refrigeration system

Adjustable Food Selections

Quickly re-configurable to almost any package size.
Full selection (5-3/4"W)
3/4 selection (4-5/16"W)
Candy selection (2-7/8"W)



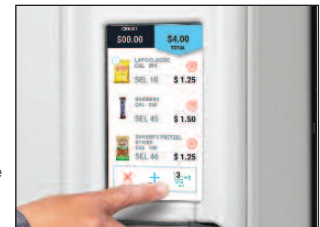
Standard Delivery Assist for Full ADA Compliance

Product is delivered at 15" via manual lift and actuated by product door entry.



Optional iCart Touch Screen Interface

Enhances consumer purchase experience. Communicates purchase information & messages to consumer.



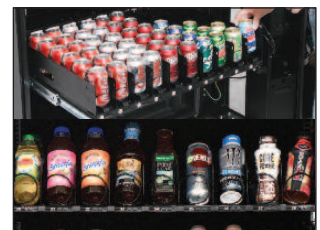
Optional Cashless

Greenlite Cashless accepts credit, debit & mobile payments with valuable telemetry and machine management tools.



Versatile Steel Beverage Trays

Hold up to 60 canned or bottle beverages and come in 9 select or optional 10 select versions.



U-Select-It
 8040 University Boulevard
 Des Moines, Iowa 50325
 1-800-247-8709
 Fax: 515-274-0390
 www.uselectit.com